

# Level Sensors

## Thermoplastic Polyester Housing

### Type ACF 10, 35 X 55 X 15 mm

**NOT FOR NEW DESIGNS**  
For replacement part numbers contact sales office.



- Thermoplastic polyester housing, rectangular
- 35 x 55 x 15 mm
- Adjustable sensing distance: 4 to 11 mm
- Power supply: 10 to 40 VDC
- Output: Transistor NPN/PNP, make switching
- Protection: Short-circuit and reverse polarity
- LED-indication for output ON
- 2 m cable

## Product Description

Capacitive proximity switch with adjustable sensing distance, 4 to 11 mm. Space saving design, sturdy poly-

ester housing, fully moulded. Screwdriver available. Delivered with 2 m cable.

## Ordering Key

### ACF 10 PPO

Type: Capacitive proximity switch  
Rated operating dist. (mm)  
Output type

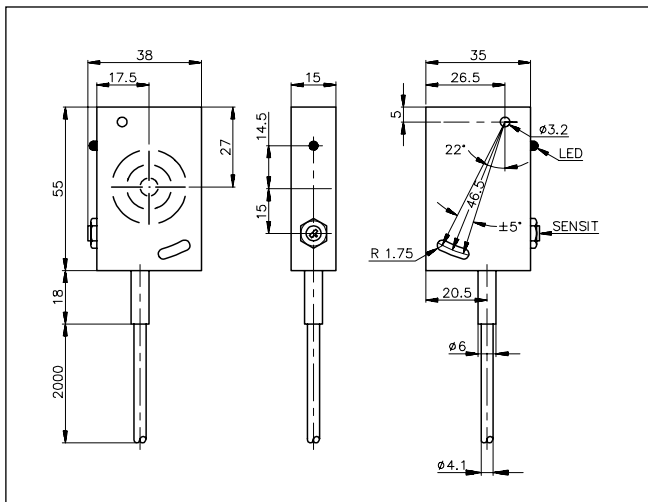
## Type Selection

Rated operating dist. (S <sub>n</sub> ) <sup>2)</sup>	Ordering no. Transistor NPN Make switching	Ordering no. Transistor PNP Make switching	<sup>1)</sup> For non-flush mounting <sup>2)</sup> Object: Grounded steel plate
11 mm <sup>1)</sup> , adjustable	ACF 10 NPO	ACF 10 PPO	

## Specifications

Rated operational volt. (U <sub>e</sub> ) (U <sub>B</sub> )	12 to 36 VDC 10 to 40 VDC (ripple included)	Repeat accuracy (R)	≤ 10%
Ripple	≤ 10%	Hysteresis (H) (Differential travel)	3 to 15% of sensing distance
Rated operational current (I <sub>a</sub> )	≤ 200 mA	Effective operating dist. (S <sub>r</sub> )	0.9 x S <sub>n</sub> ≤ S <sub>r</sub> ≤ 1.1 x S <sub>n</sub>
Max. capacitive load	1 µF	Usable operating dist. (S <sub>u</sub> )	0.85 x S <sub>r</sub> ≤ S <sub>u</sub> ≤ 1.15 x S <sub>r</sub>
No-load supply current (I <sub>o</sub> )		Environment	
ACF 10 NPO	≤ 12 mA (no load)	Operating temperature	-25° to +70°C (-13° to +158°F)
ACF 10 PPO	≤ 12 mA (no load)	Storage temperature	-30° to +80°C (-22° to +176°F)
Voltage drop (U <sub>d</sub> )	≤ 2.8 VDC at max. load	Degree of protection	IP 67 (Nema 1, 3, 4, 6, 13)
Protection	Reverse polarity, short-circuit	Housing material	Yellow thermoplastic polyester
Transient voltage	≤ 1 kV/0.5 J (prepared)	Cable	2 m, 3 x 0.25 mm <sup>2</sup> grey PVC, oil proof
Frequency of operating cycles (f)	20 Hz	Weight	100 g
Indication for output ON	LED, yellow		
Rated operating dist. (S <sub>n</sub> ) (adjustable)	4 to 11 mm factory set at 10 mm Reference object: Grounded steel plate. Other objects: Refer to "Reduction Factors", Technical information.		

## Dimensions



## Wiring Diagrams

Refer to "Wiring Diagrams", Technical information.

## Installation Hints

Refer to "Installation Hints", Technical information.

## Power Supplies

Power supplies VAC: > SS 110.

Power supplies VDC: > SS 130/140.

Power supplies with amplifier relays: > SV 190.