

Energy Management

Split core current sensors

Type CTV8X

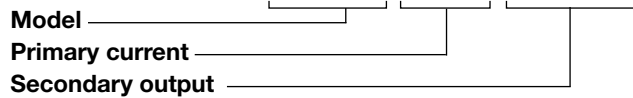


- Split core current sensor for retrofit applications
- Accuracy class 1%
- 0.333V standard secondary output

Product description

Split core current sensor, suitable for retrofit applications when used in combination with EM21-72V energy meter.

How to order **CTV8X 800A 333MV**



Type Selection

Primary current

800A: 800A primary current input

Secondary output

333MV: 333mV secondary output voltage

Specification

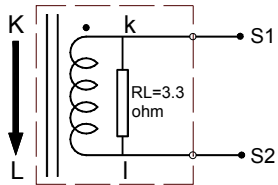
Electrical specifications

Rated Primary Current	800A (1-1000Amax)
50/60Hz	
Current ration	800A/333mV
Accuracy	1%
Operating temperature range	from -40 to 85°C
Storage temperature range	from -45 to 90°C
Dielectric withstand voltage (Hi-pot)	2500V/1mA/1min
Insulation Resistance	DC500V/100MΩ min
Max primary cable system voltage	660V

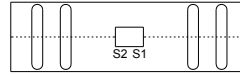
Mechanical specification

Housing material	PTB357TF
Opening Angle	180 degree
Output terminal	WJ2EDGK-7.62-02P
Approx weight	725g
Approvals	CE, cURus

Wiring diagram



Dimensions



Top View

