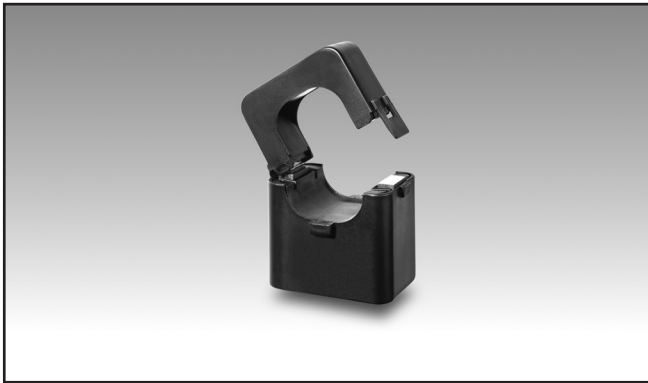


# Energy Management

## Split core current sensors

### Type CTV4X

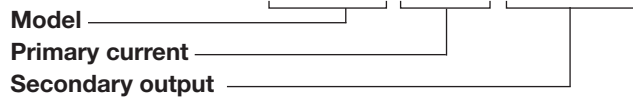


- Split core current sensor for retrofit applications
- Accuracy class 1%
- 0.333V standard secondary output

### Product description

Split core current sensor with compact dimensions, suitable for retrofit applications when used in combination with EM21-72V energy meter.

### How to order **CTV4X 400A 333MV**



### Type Selection

#### Primary current

**400A:** 400A primary current input

#### Secondary output

**333MV:** 333mV secondary output voltage

### Specification

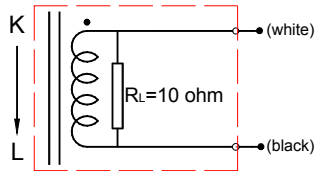
#### Electrical specifications

Rated Primary Current	400A (20-480A max)
50/60Hz	
Current ratio	400A/333mV
DC resistance at 20°C	130 Ω max
Accuracy	1%
Linearity	0.5%
Phase error at rated current range @RL =50 Ω	≤2°
Operating temperature range	from -40 to 85°C
Storage temperature range	from -45 to 90°C
Dielectric withstand voltage (Hi-pot)	3500V/1mA/1min
Insulation Resistance	DC500V/100MΩ min
Max primary cable system voltage	660 V

#### Mechanical specification

Housing material	PP3307
Opening Angle	180 degree
Output terminal	UL1015 22AWG (0.32mm <sup>2</sup> ) PVC wire
Approx weight	200g
Approvals	CE, cURus

## Wiring diagram



## Dimensions

