



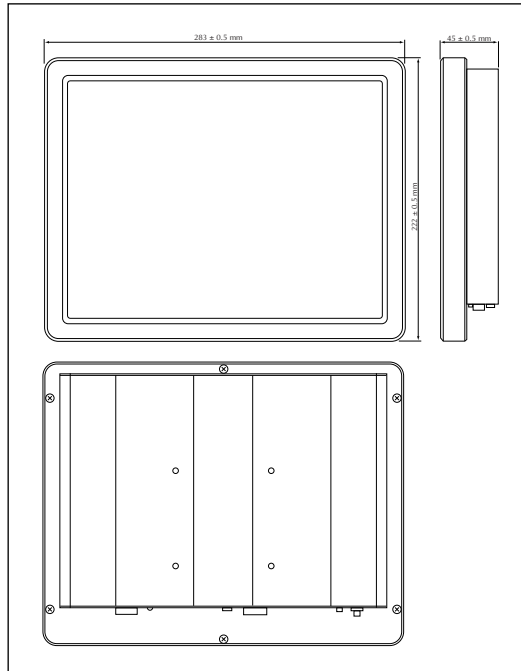
## SPECIFICATIONS

<b>Display type</b>	10.4" resistive 4 wires
<b>Brightness</b>	230 nit (cd/m2)
<b>Resolution</b>	800 x 600
<b>CPU</b>	Onboard VIA Eden V4 1G, optional Eden ULV 1.6G (8W)
<b>BIOS</b>	Award, 512KB Flash BIOS
<b>System Chipset</b>	VIA CX700M
<b>I/O Chipset</b>	VIA VT1211
<b>System Memory</b>	One 200-pin DDR2 SODIMM socket, supports up to 1GB DDR2 400/533 SDRAM
<b>SSD</b>	One CF socket by IDE secondary slave channel supports Type I / II Compact Flash Card.
<b>Watchdog Timer</b>	Reset: 1 min.~255 min. and 1 min./step
<b>Display</b>	VIA CX700M
<b>LCD Panel</b>	LCD Resolution up to 2048 x 1536 @ 32 bpp (85Hz)
<b>Audio</b>	VIA VT1708A supports 2CH Audio
<b>Ethernet</b>	Dual RTL8100C Gigabit LAN/10/100/1000 Base-Tx Fast Ethernet compatible Wireless Network 10 Base-T Fast Ethernet Compatible
<b>IO</b>	1 x RS-232, 2 x SATA, 1 Mini PCI, 2 x USB 2.0
<b>COM Port</b>	1 x RS-232
<b>Ethernet Port</b>	Dual RTL8110SC Giga LAN (LPC-1201-E10/ LPC-1001- E10)
<b>VGA / LCD Port</b>	One RTL8100C LAN (LPC- 1201-E05/ LPC-1201-E05)
<b>Audio Port</b>	1 x DB-15, 1 x DVI (optional) Line-out (Optional 2W AMP)
<b>USB Port</b>	2 x USB 2.0, optional 3 x USB 2.0
<b>Mouse &amp; KB</b>	1 x PS/2 mini DIN (optional)
<b>Power Input</b>	12V
<b>Power Output</b>	5A (60W)
<b>Operating Temperature</b>	-10 to +40°C (14~104°F)
<b>Storage Temperature</b>	-20 to +75°C (-4~167°F)
<b>Relative Humidity</b>	5 to 90% @ 40°C (104°F), relative humidity, noncondensing
<b>Dimension (W x D x H)</b>	259 x 188 x 38 mm
<b>Weight</b>	1.4 Kg
<b>Mounting</b>	Desktop (VESA Compliance)

## SUPPLY SPECIFICATIONS

<b>Power supply</b>	Supplied by 12 VDC
<b>Consumption</b>	5 A / 60 W

## DIMENSIONS



## SAFETY PRECUATIONS

### Warning!

Always completely disconnect the power cord from your chassis whenever you work with the hardware. Do not make connections while the power is on. Sensitive electronic components can be damaged by sudden power surges. Only experienced electronics personnel should open the PC chassis.

### Caution!

Always ground yourself to remove any static charge before touching the CPU card. Modern electronic devices are very sensitive to static electric charges. As a safety precaution, use a grounding wrist strap at all times. Place all electronic components in a static-dissipative surface or static-shielded bag when they are not in the chassis.

# smart-house

User Manual



Touchscreen

Type BTM-T10-230

T

# smart-house

Over Hadstenvej 40, DK-8370 Hadsten  
Phone +45 89606100, Fax +45 86982522

Certified in accordance with ISO 9001

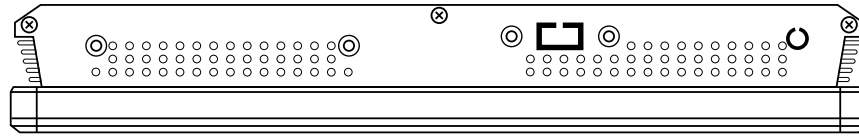
MAN BTM-T10-230 rev 10 08.09



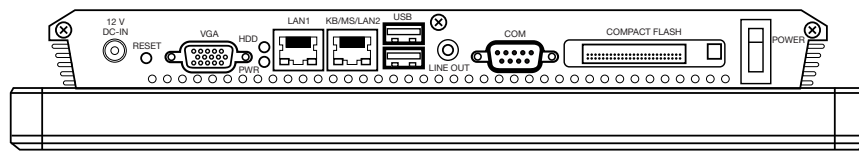


## SYSTEM OVERVIEW

View from top



View from bottom



### Connectors

Label	Function	Note
POWER	Power on button	
CF	CF Type I/II Socket with Ejector	
COM	Serial port	DB-9 male connector
LINE OUT	Line-out audio jack	
USB	2 x USB 2.0 connector	Dock USB
LAN1	RJ-45 Ethernet connector 1	
LAN2 (KB/MS)	RJ-45 Ethernet connector 1 (LAN2 is default, KB/MS is optional)	
HDD	HDD indicator	
PWR	System power indicator	
VGA	CRT connector	DB-15 female connector
RESET	Reset button	
DC-IN	DC Power-in connector	

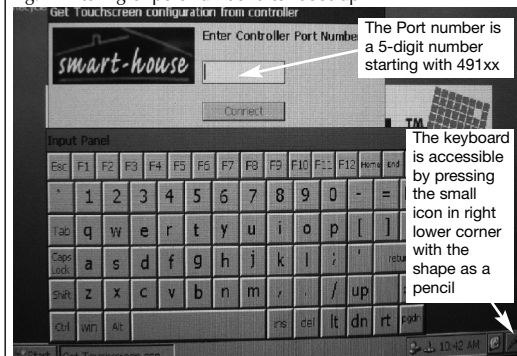
## MODE OF OPERATION

The smart-house Touchscreen is pre-programmed from factory with firmware. This is needed to get in contact with the smart-house configuration tool.

Also, the smart-house Touchscreen has built-in WIFI.

This means that the installer only has to connect power to the Touch-screen to make contact to the smart-house BH8-CTRLX-230 configuration tool. It is essential that the smart-house controller BH8-CTRLX-230 has been programmed before trying to connect the smart-house Touch screen.

Fig.1 -Entering of port number after boot-up



The Port number is a 5-digit number starting with 491xx

The keyboard is accessible by pressing the small icon in right lower corner with the shape as a pencil

The port number is given from the Touch-screen setup menu in the BH8-CTRLX-230 configuration tool.

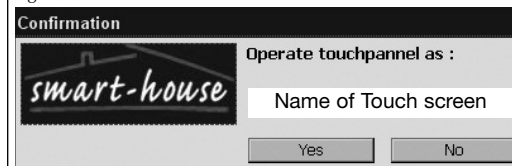
Type in the 5-digit number given from the BH8-CTRLX-230 configuration program. See Fig.2

Fig.2 – Port number from BH8-CTRLX-230



The connecting takes 1-2 seconds and the Touch-screen will respond with the following screen.

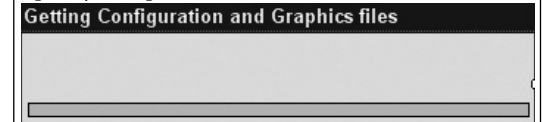
Fig. 3 -Connection established



If the connection has been established, the Touchscreen will inform the installer with the "Name of the Touchscreen". If the name is correct press "Yes" and the Touchscreen will go to Fig 4. This takes 1-2 sec. If the name is wrong press "No" and the

Touchscreen will return to Fig. 1, where it is possible to enter a new port number.

Fig.4 -Uploading files



The upload takes up to 60 seconds depending of the size of the configuration program. If the upload is finished successfully, the Touchscreen is fully operational right after.

#### Note:

If there is a Power cut of the entire system, the Touchscreen will return to Fig. 4 and start to upload the files again.

If Ethernet is disconnected for more than 25 seconds, the Touchscreen will start from Fig. 1 and the installer must follow the installation procedure again.

## SCOPE OF SUPPLY

- Touchscreen 10 inch.
- CF-card 1 GB
- Vesa Desk Stand
- Software is installed from factory

